

Compliance Team – Health Records

Kestrel House
Hellesdon Hospital
Drayton High Road
Norwich
Norfolk
NR6 5BE

Tel: 01603 421687
Fax: 01603 421411

FOI REQUEST NUMBER 280 2015

Request

I am writing to request the organisational structure chart of your Trust under the Freedom of Information Act. I would like to place particular emphasis on the structures of any Finance, Human Resource and Procurement (Clinical and non) departments and management staff.

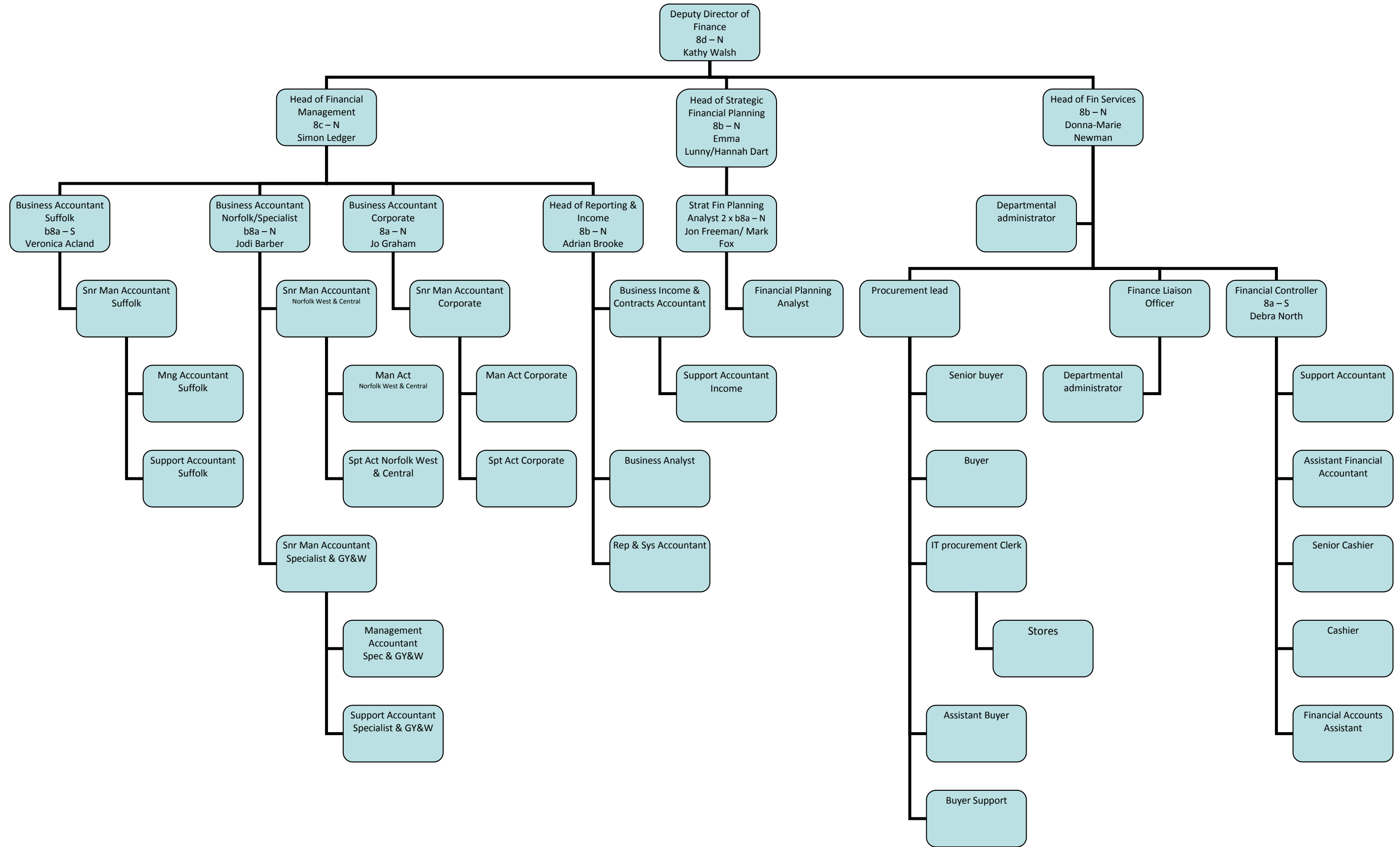
Response

Thank you for your recent request under the Freedom of Information Act. Please find attached the requested Organisation Charts.

The Trust provides a complaints procedure to deal with complaints about the Trust's handling of requests for information. If you feel you need to make a complaint, in the first instance, you should contact a Non-Executive Director via the Chair of the Trust. If you feel you have exhausted our internal complaints procedure, you also have the right and may feel you wish to write to the Information Commissioner who can be contacted on telephone number 01625 545740 or at www.ico.gov.uk.

NSFT Finance Department Organisation Structure

January 2015



Leigh Howlett
Director of Strategy & Resources

Head of Human Resources
(Band 8c)
1 w.t.e.

PA to Head of Human Resources
(Band 4)
1 w.t.e.

HR Team Secretary
Norfolk
(Band 3)
1 w.t.e.

HR Team Secretary
Suffolk
(Band 3)
1 w.t.e.

HR Systems Manager
Band 8a
1 w.t.e.

HR Operations Manager
Band 8a
1 w.t.e.

Strategic HR & OD Manager
Band 8a
1 w.t.e.

E-Rostering Manager
(Band 7)
1 w.t.e.

HR Business Intelligence
Manager
(Band 7)
1 w.t.e.

Medical Staffing
Manager
Band 7
1 w.t.e.

Recruitment Lead
(Band 6)
1 w.t.e.

HR Business Partner
(Service Desk &
Corporate)
Band 6
1 w.t.e.

Senior Operational
HR Business Partner
Band 7
1 w.t.e.

HR Business Partner
(Gt Yarmouth &
Waveney)
(Band 6)
1 w.t.e.

Strategic OD & HR
Business Partner
Band 7
4.0 w.t.e.

HR Business Partner
(Specialist & Secure)
(Band 6)
1 w.t.e.

E-Roster Implementer
(Fixed Term)
(Band 7)
1 w.t.e.

HR Business
Intelligence Analyst
(Band 6)
1 w.t.e.

Medical Staffing
Advisor
(Band 5)
2 w.t.e. (1 w.t.e.
fixed term 6 mths)

Senior Recruitment
Officer (Projects)
(Band 4)
1 w.t.e.

HR Service Desk
Advisor
Band 5
2 w.t.e.

HR Business Partner
(Central 1.5 w.t.e.)
(West Norfolk 0.5 w.t.e.)
Band 6

HR Business Partner
(East Suffolk 1 w.t.e.)
(West Suffolk 1 w.t.e.)
Band 6

HR Business Partner
(Specialist & Secure)
(Band 6)
1 w.t.e.

E-Rostering Administrator
(Band 4)
2 w.t.e.

Workforce Analyst
(Band 4)
1 w.t.e.

Medical Staffing
Administrator
Band 3
1 w.t.e.

Medical Recruitment
Officer
Band 3
1 w.t.e.

HR Service Desk
Administrator
(Band 4)
1.4 w.t.e.

Recruitment Officer
Band 3
0.5 w.t.e.

Recruitment Officer
Band 3
1.5 w.t.e.

Recruitment Officer
Band 3
0.5 w.t.e.

Recruitment Officer
Band 3
1 w.t.e.

Medical Staffing
Administrator
Band 3
1 w.t.e.

Medical Recruitment
Officer
Band 3
1 w.t.e.

Recruitment Officer
Band 3
0.5 w.t.e.

Recruitment Officer
Band 3
1.5 w.t.e.

Recruitment Officer
Band 3
0.5 w.t.e.

Recruitment Officer
Band 3
1 w.t.e.

Recruitment Officer
Band 3
1 w.t.e.