

Compliance Team – Health Records

Kestrel House
Hellesdon Hospital
Drayton High Road
Norwich
Norfolk
NR6 5BE

Tel: 01603 421687
Fax: 01603 421411

FOI REQUEST NUMBER 199 2015

Request:

I'm looking to get organisation charts including names of member of staff under the following Executive Members to at least Band 7 level.

- Chief Operating Officer
- Chief Finance Officer
- Director of Nursing
- Medical Director
- Director of Transformation
- People/HR/Workforce Directors

Specifically these Organisational charts should include teams from the following functions if they exist:

- Operations Management
- IM&T
- PMO/Projects
- Procurement
- Governance/Quality/Risk/PALS/Nursing
- Procurement
- Strategy/Commercial
- Finance
- HR

Response:

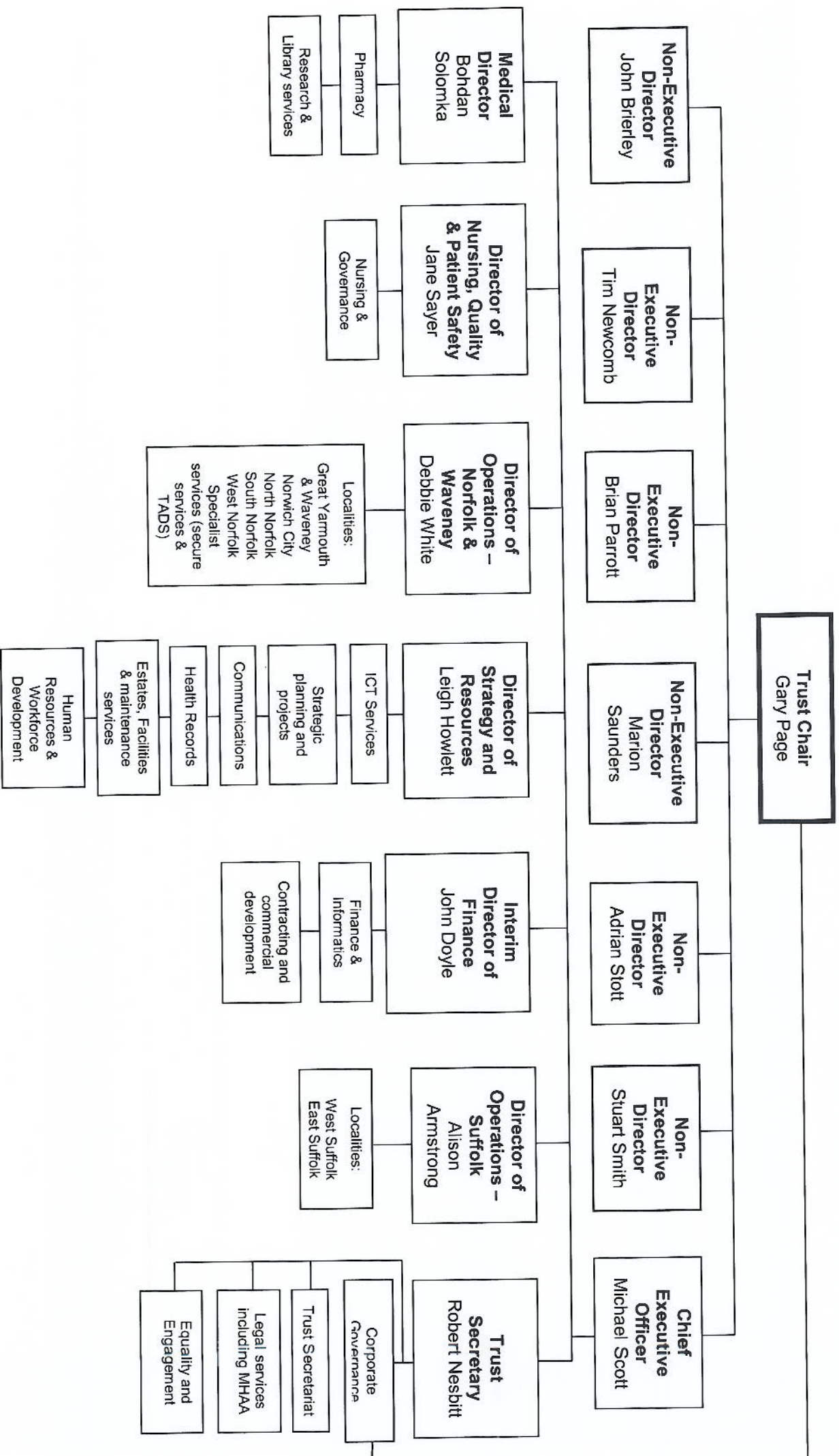
Thank you for your recent request under the Freedom of Information Act. Please find attached the Organisation Charts requested, for those departments that the Trust has in place from your list. Some teams are currently under reconstruction so charts are yet to be finalised.

The Trust provides a complaints procedure to deal with complaints about the Trust's handling of requests for information. If you feel you need to make a complaint, in the first instance, you should contact a Non-Executive Director via the Chair of the Trust. If you feel you have exhausted our internal

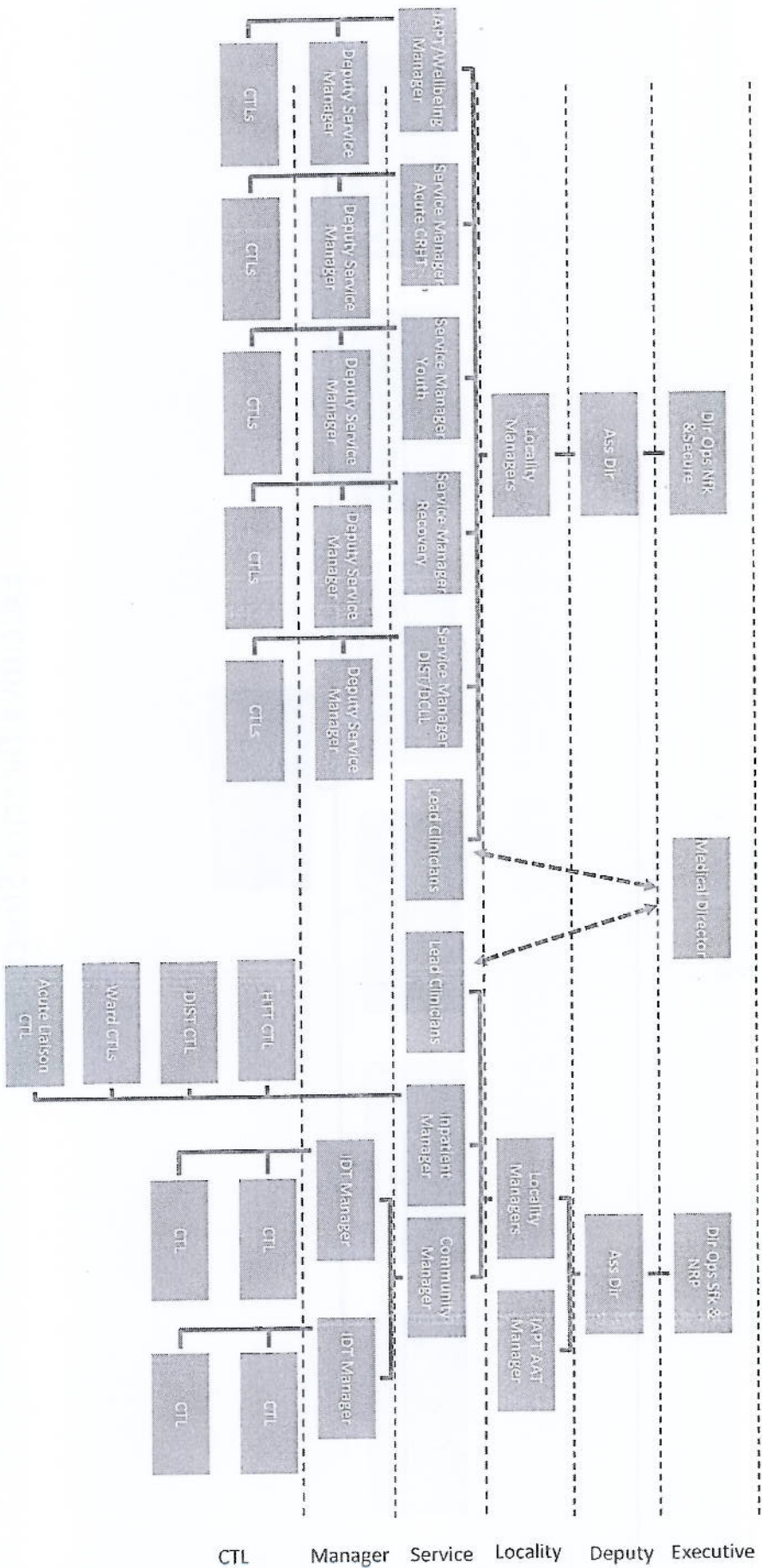
complaints procedure, you also have the right and may feel you wish to write to the Information Commissioner who can be contacted on telephone number 01625 545740 or at www.ico.gov.uk.

Norfolk and Suffolk NHS

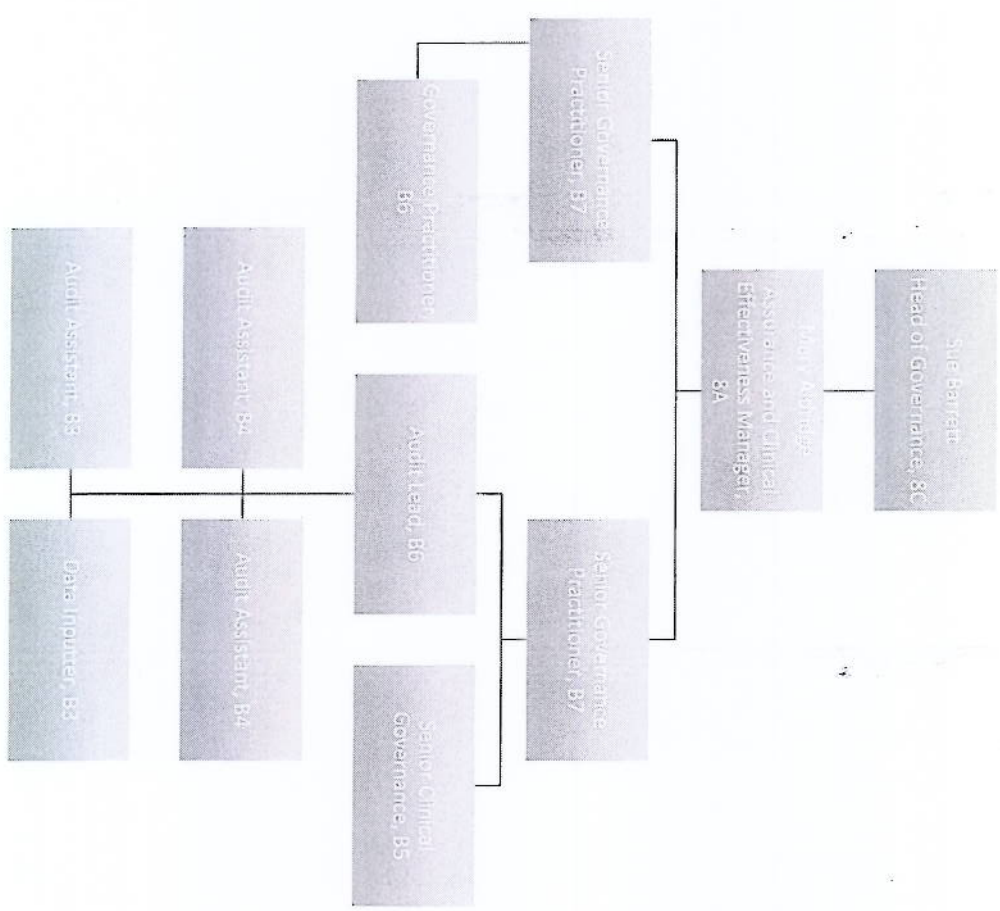
NHS Foundation Trust



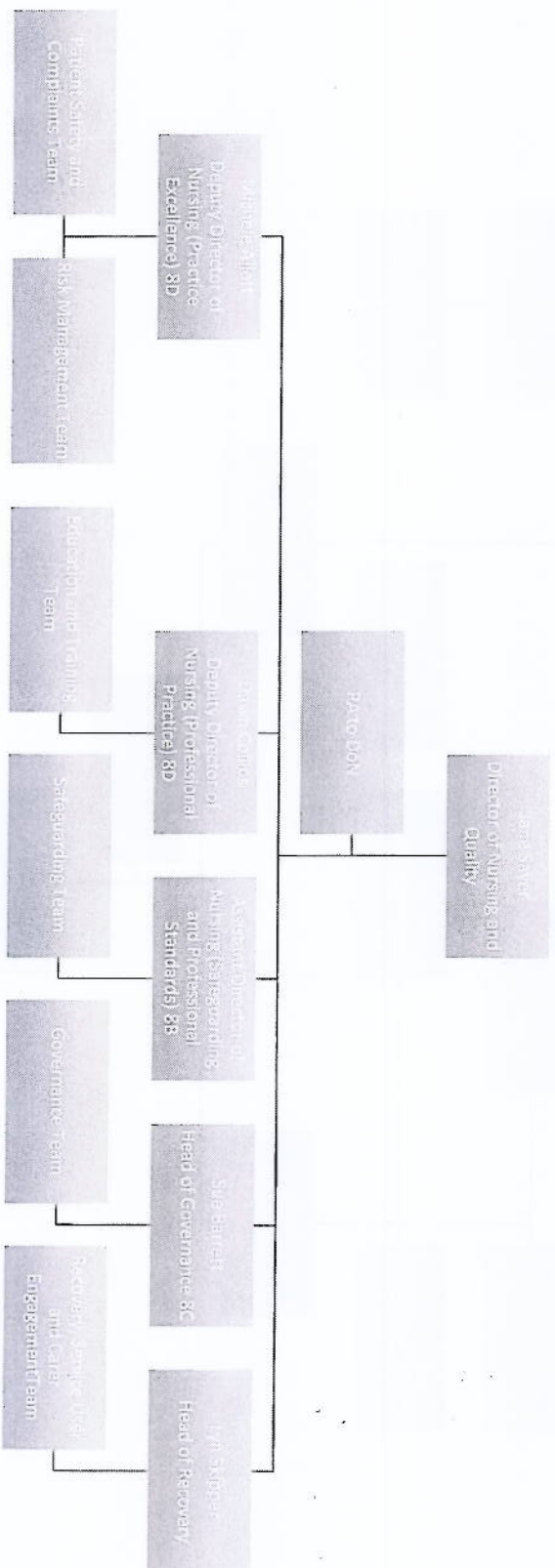
NSFT Operational Management Structure



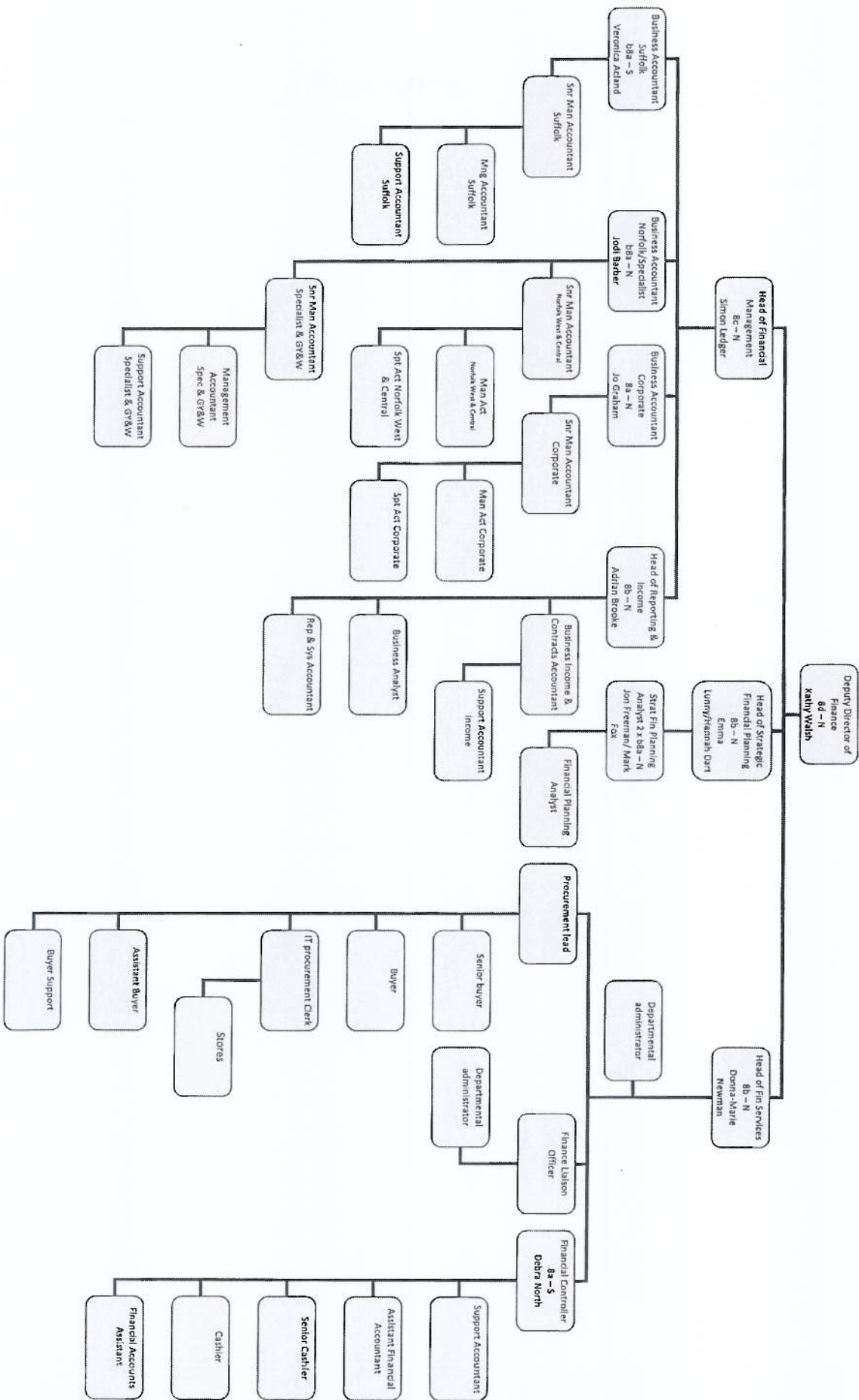
Governance



Nursing and Quality Structure



Practice Excellence



Leigh Howlett
Director of Strategy & Resources

Head of Human Resources
(Band 8c)
1 w.t.e.

PA to Head of Human Resources
(Band 4)
1 w.t.e.

HR Team Secretary
Norfolk
(Band 3)
1 w.t.e.

HR Team Secretary
Suffolk
(Band 3)
1 w.t.e.

HR Systems Manager
Band 8a
1 w.t.e.

E-Rostering Manager
(Band 7)
1 w.t.e.

E-Rostering Implementer
(Fixed Term)
(Band 7)
1 w.t.e.

E-Rostering Administrator
(Band 4)
2 w.t.e.

HR Business Intelligence
Manager
(Band 7)
1 w.t.e.

HR Business
Intelligence Analyst
(Band 6)
1 w.t.e.

Workforce Analyst
(Band 4)
1 w.t.e.

Medical Staffing
Manager
Band 7
1 w.t.e.

Medical Staffing
Advisor
(Band 5)
2 w.t.e. (1 w.t.e.
fixed term 6 mths)

Medical Staffing
Administrator
Band 3
1 w.t.e.

HR Operations Manager
Band 8a
1 w.t.e.

Recruitment Lead
(Band 6)
1 w.t.e.

Senior Recruitment
Officer (Projects)
(Band 4)
1 w.t.e.

Medical
Recruitment Officer
Band 3
1 w.t.e.

HR Business Partner
(Service Desk &
Corporate)
Band 6
1 w.t.e.

HR Service Desk
Advisor
Band 5
2 w.t.e.

HR Service Desk
Administrator
(Band 4)
1.4 w.t.e.

Recruitment Officer
Band 3
0.5 w.t.e.

Senior HRBP
(Operations)
Band 7
1 w.t.e.

HR Business Partner
(Central 1.5 w.t.e.,
West Norfolk 0.5 w.t.e)
Band 6

HR Business Partner
(Gt Yarmouth &
Waverney)
(Band 6)
1 w.t.e.

Recruitment Officer
Band 3
1.5 w.t.e.

Senior HRBP
(Projects)
Norfolk
Band 7
1.5 w.t.e.

HR Business Partner
(East Suffolk 1 w.t.e.,
West Suffolk 1 w.t.e.)
Band 6

HR Business Partner
(Specialist & Secure)
(Band 6)
1 w.t.e.

Recruitment Officer
Band 3
0.5 w.t.e.

Senior HRBP
(Trust-wide Projects)
Corporate
Band 7
1.5 w.t.e.

HR Business Partner
(Suffolk)
Suffolk
Band 7
1 w.t.e.

Recruitment Officer
Band 3
1 w.t.e.

Strategic HR Manager
Band 8a
1 w.t.e.

